



Vacant Trapline(s) Pembroke District February 2, 2024



0 50 km
1:760,000

- Freeway
- Expressway / Highway
- Arterial
- Vacant Trapline Area
- MNRF District
- Waterbody
- Watercourse
- First Nation Reserve
- Regulated Provincial Park
- Conservation Reserve

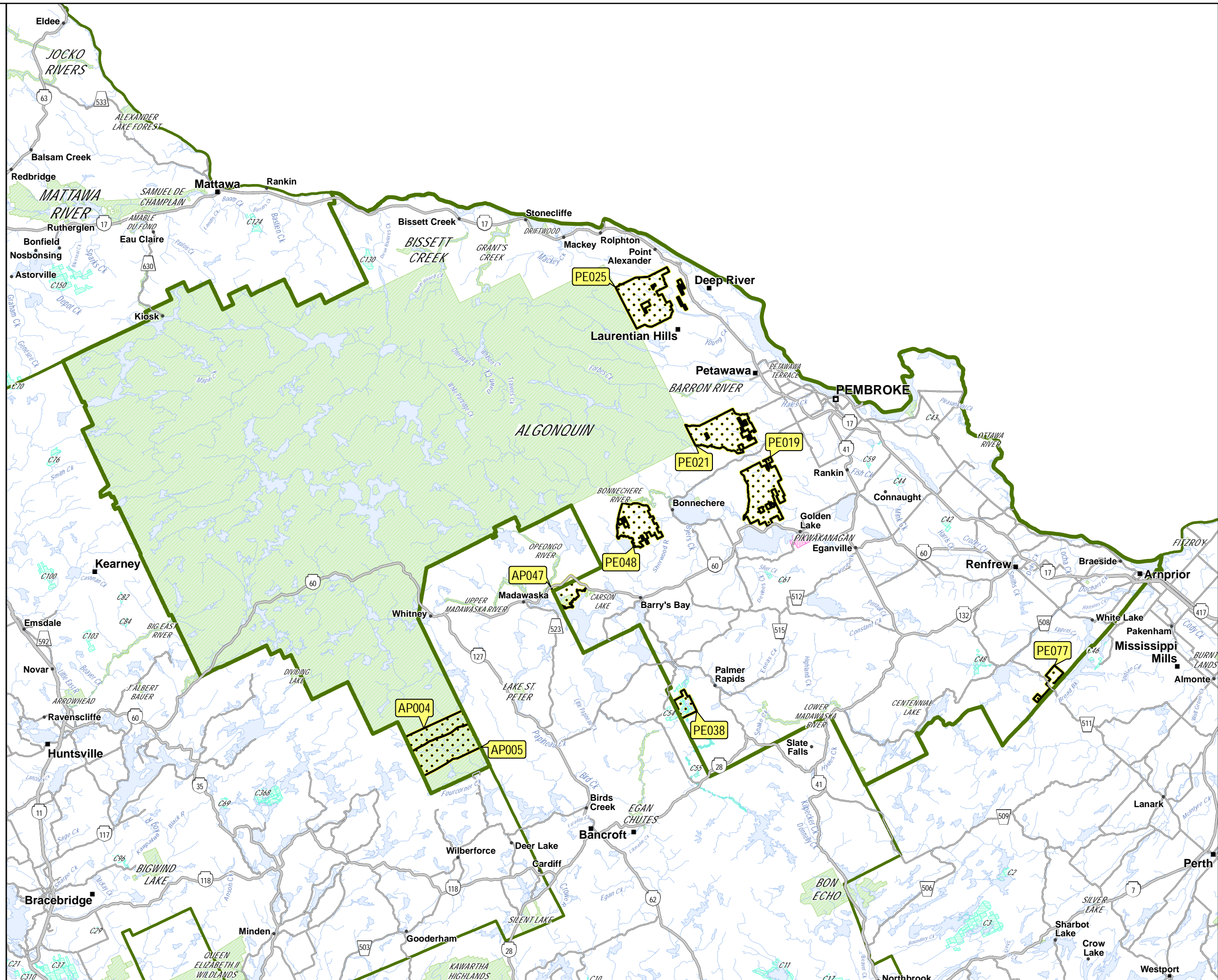
Disclaimer:
This map is illustrative only. Do not rely on this map for legal administrative purposes. Do not rely on it as being a precise indicator of routes, locations of features, or as a guide to navigation. This map may contain cartographic errors or omissions.

Data Sources:
Ministry of Natural Resources and Forestry, 2024

Projected Coordinate System:
MNR Lambert Conformal Conic

Geographic Coordinate System:
GCS North American 1983

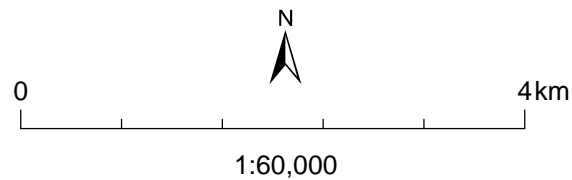
Produced by the Ministry of Natural Resources and Forestry.
© 2024, King's Printer for Ontario
Published 2024-02-02





Pembroke District Trapline AP004

January 30, 2024



- Primary Roads, MNR
- Branch Roads, MNR
- Operational Roads, MNR
- Local Roads
- Vacant Trapline Area
- Township Boundary
- MNR District
- Waterbody
- Watercourse
- Lot Fabric
- Crown Land Disposition
- Regulated Provincial Park
- Patent Land

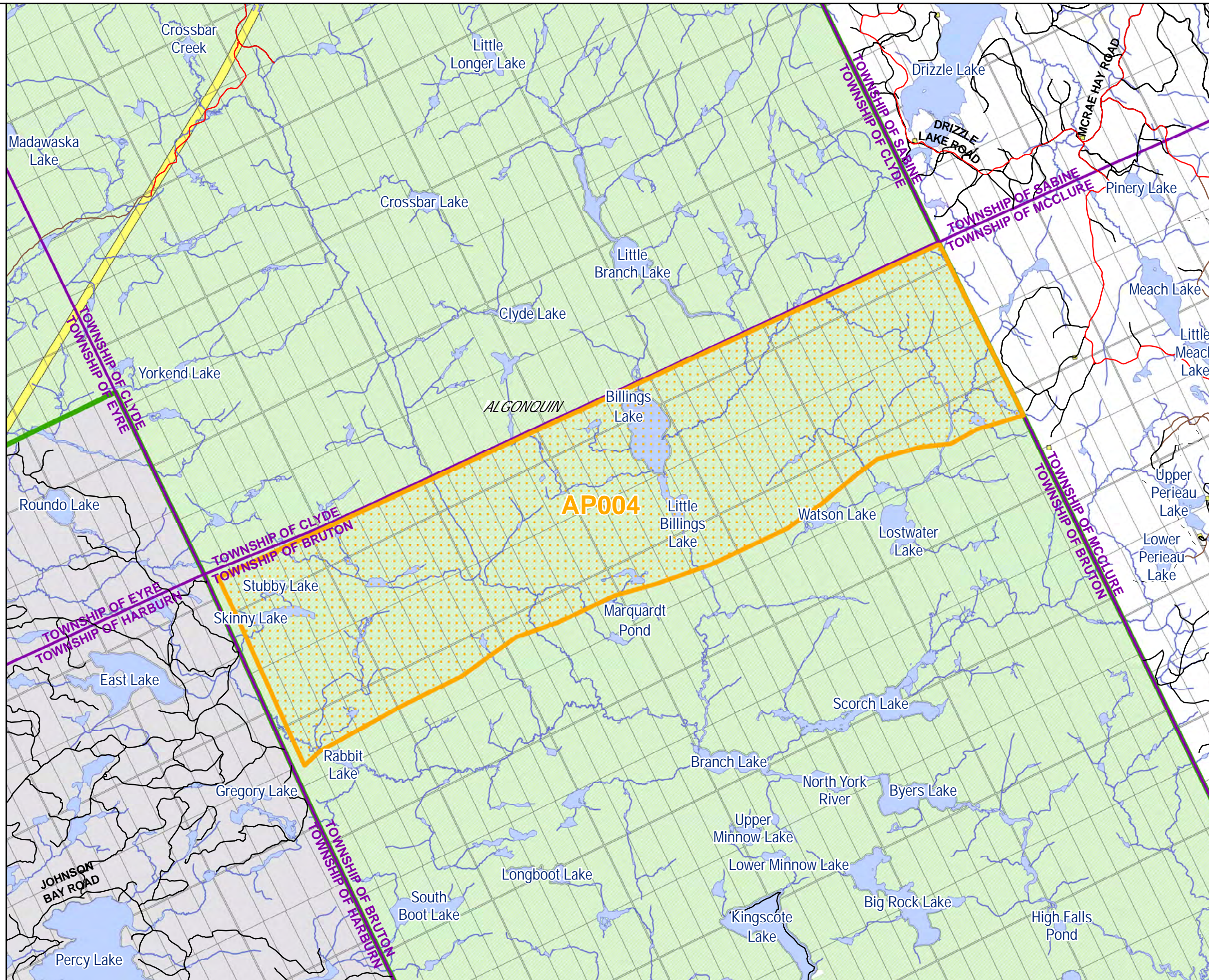
Disclaimer:
This map is illustrative only. Do not rely on this map for legal administrative purposes. Do not rely on it as being a precise indicator of routes, locations of features, or as a guide to navigation. This map may contain cartographic errors or omissions.

Data Sources:
Ministry of Natural Resources and Forestry, 2024

Projected Coordinate System:
MNR Lambert Conformal Conic

Geographic Coordinate System:
GCS North American 1983

Produced by the Ministry of Natural Resources and Forestry.
© 2024, King's Printer for Ontario
Published 2024-01-30








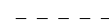
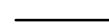









Pembroke District Trapline AP005

January 30, 2024



0 4km

1:60,000

-  Highways
-  Primary Roads, MNRF
-  Branch Roads, MNRF
-  Operational Roads, MNRF
-  Local Roads
-  Vacant Trapline Area
-  Township Boundary
-  MNRF District
-  Waterbody
-  Watercourse
-  Lot Fabric
-  Crown Land Disposition
-  Regulated Provincial Park
-  Patent Land

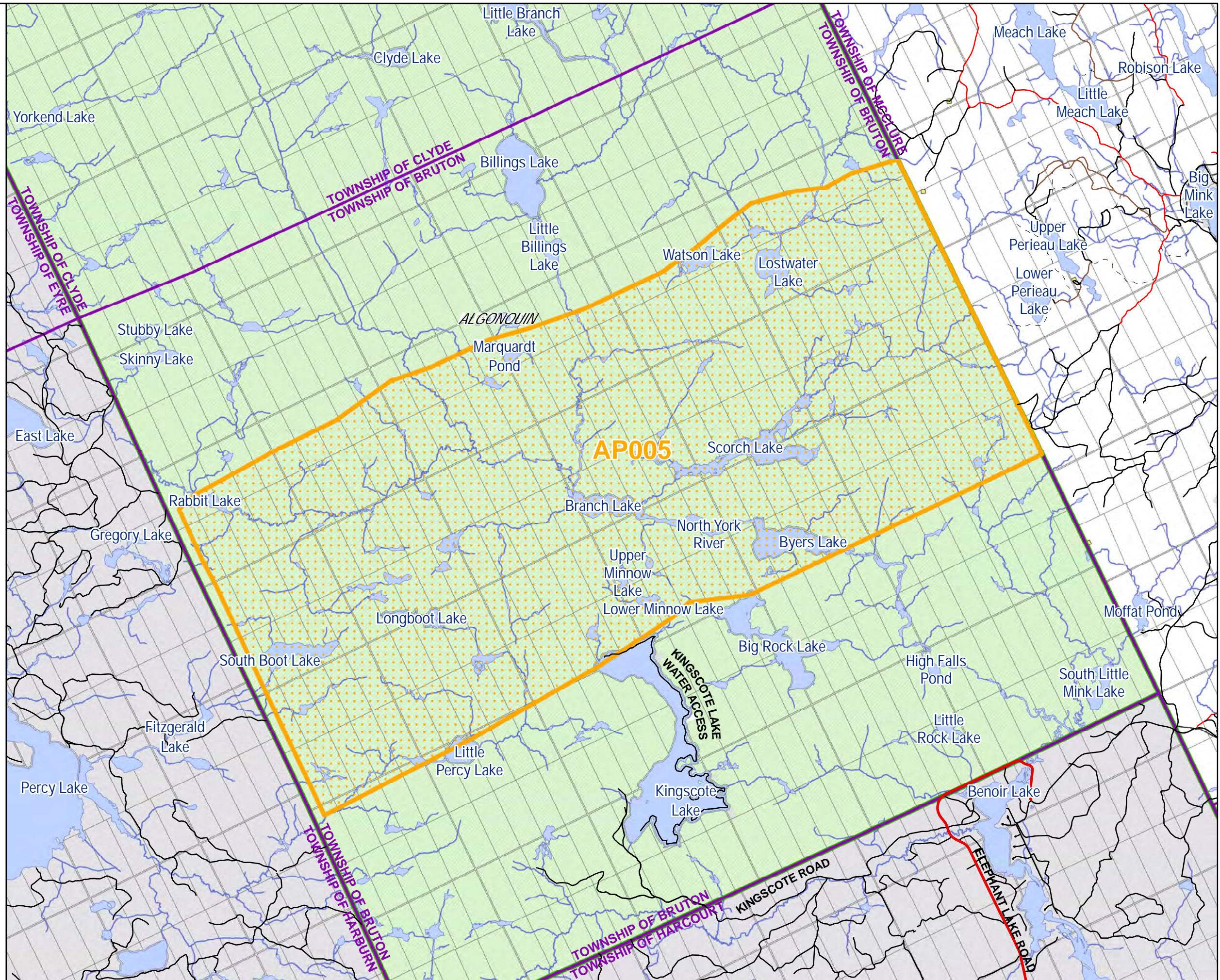
Disclaimer:
This map is illustrative only. Do not rely on this map for legal administrative purposes. Do not rely on it as being a precise indicator of routes, locations of features, or as a guide to navigation. This map may contain cartographic errors or omissions.

Data Sources:
Ministry of Natural Resources and Forestry, 2024

Projected Coordinate System:
MNR Lambert Conformal Conic

Geographic Coordinate System:
GCS North American 1983

Produced by the Ministry of Natural Resources and Forestry.
© 2024, King's Printer for Ontario
Published 2024-01-30





Pembroke District Trapline AP047 January 30, 2024



1:35,500

- Highways
- Primary Roads, MNRF
- Branch Roads, MNRF
- Operational Roads, MNRF
- Local Roads
- Vacant Trapline Area
- Township Boundary
- MNRF District
- Waterbody
- Watercourse
- Lot Fabric
- Crown Land Disposition
- Regulated Provincial Park
- Patent Land

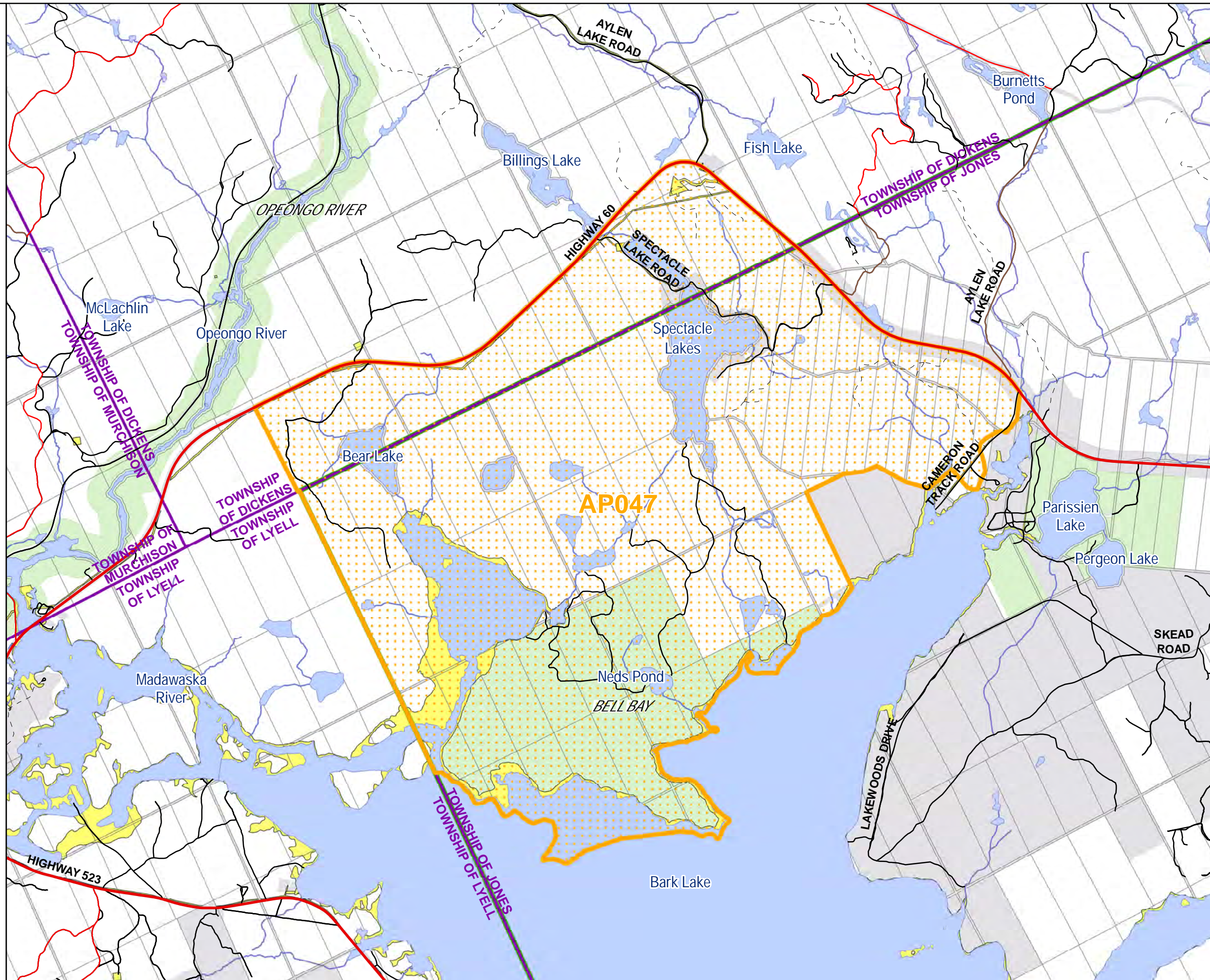
Disclaimer:
This map is illustrative only. Do not rely on this map for legal administrative purposes. Do not rely on it as being a precise indicator of routes, locations of features, or as a guide to navigation. This map may contain cartographic errors or omissions.

Data Sources:
Ministry of Natural Resources and Forestry, 2024

Projected Coordinate System:
MNR Lambert Conformal Conic

Geographic Coordinate System:
GCS North American 1983

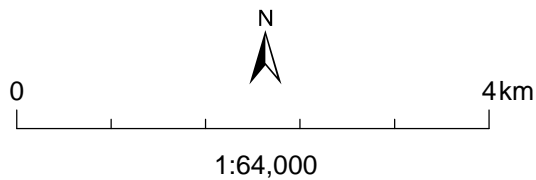
Produced by the Ministry of Natural Resources and Forestry.
© 2024, King's Printer for Ontario
Published 2024-01-30





Pembroke District Trapline PE019

January 30, 2024



- Highways
- Primary Roads, MNRF
- Branch Roads, MNRF
- Operational Roads, MNRF
- Local Roads
- Vacant Trapline Area
- Township Boundary
- MNRF District
- Waterbody
- Watercourse
- Lot Fabric
- Crown Land Disposition
- Patent Land

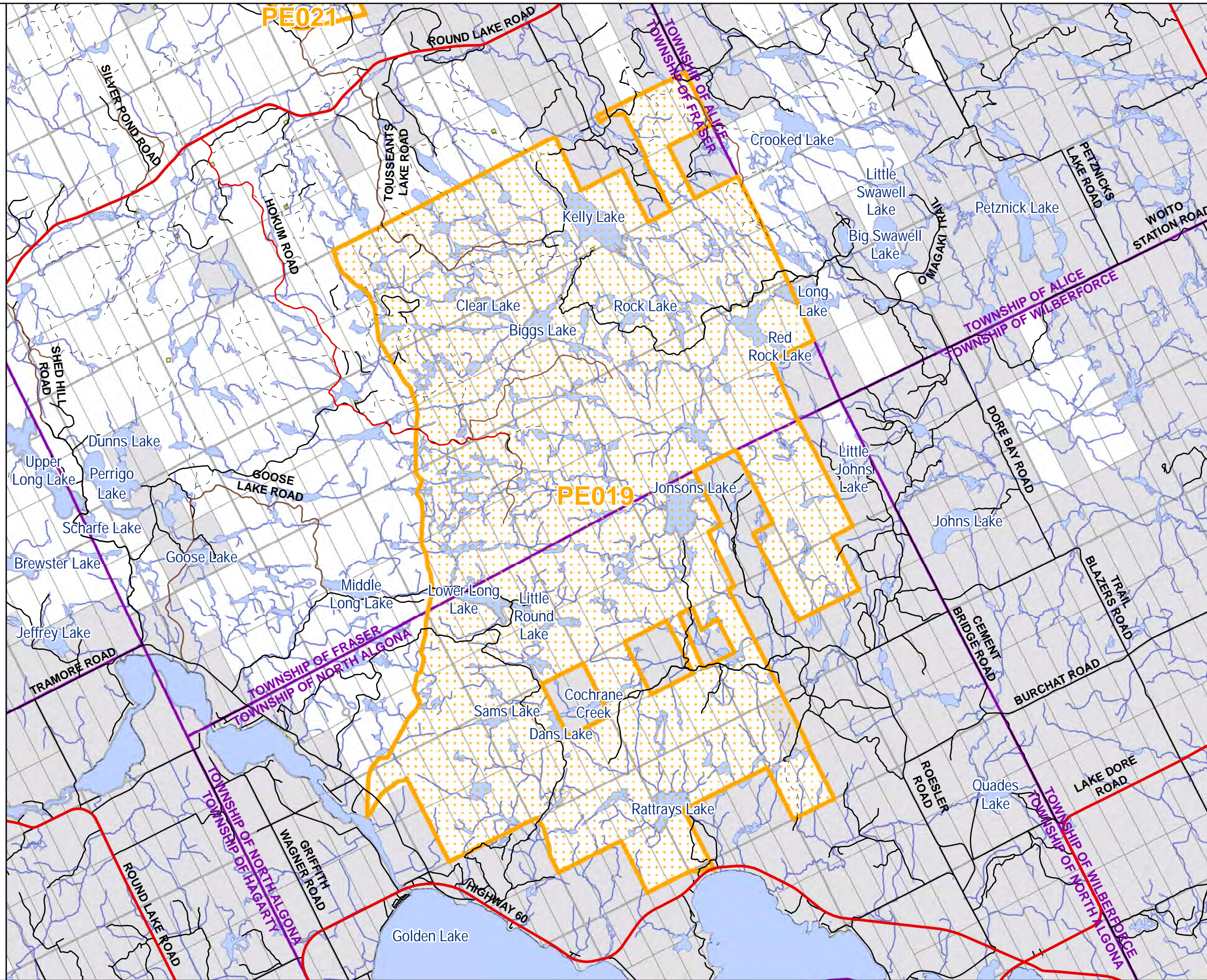
Disclaimer:
This map is illustrative only. Do not rely on this map for legal administrative purposes. Do not rely on it as being a precise indicator of routes, locations of features, or as a guide to navigation. This map may contain cartographic errors or omissions.

Data Sources:
Ministry of Natural Resources and Forestry, 2024

Projected Coordinate System:
MNR Lambert Conformal Conic

Geographic Coordinate System:
GCS North American 1983

Produced by the Ministry of Natural Resources and Forestry.
© 2024, King's Printer for Ontario
Published 2024-01-30








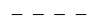









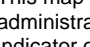
Pembroke District Trapline PE021

January 30, 2024



0 3.5km

1:55,539

-  Highways
-  Primary Roads, MNRF
-  Branch Roads, MNRF
-  Operational Roads, MNRF
-  Local Roads
-  Vacant Trapline Area
-  Township Boundary
-  MNRF District
-  Waterbody
-  Watercourse
-  Lot Fabric
-  Crown Land Disposition
-  Regulated Provincial Park
-  Patent Land

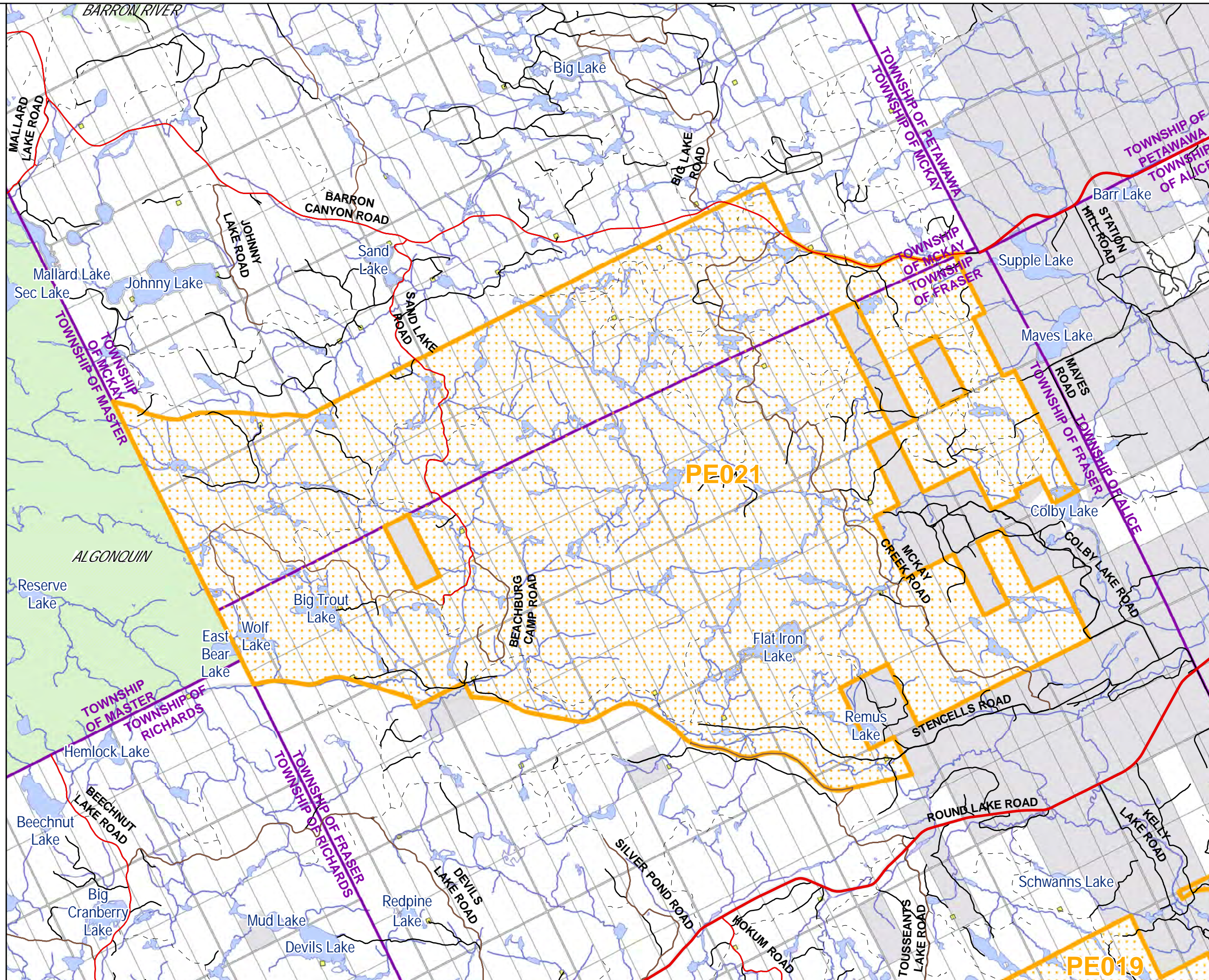
Disclaimer:
This map is illustrative only. Do not rely on this map for legal administrative purposes. Do not rely on it as being a precise indicator of routes, locations of features, or as a guide to navigation. This map may contain cartographic errors or omissions.

Data Sources:
Ministry of Natural Resources and Forestry, 2024

Projected Coordinate System:
MNR Lambert Conformal Conic

Geographic Coordinate System:
GCS North American 1983

Produced by the Ministry of Natural Resources and Forestry.
© 2024, King's Printer for Ontario
Published 2024-01-30



PE019



Pembroke District Trapline PE025 February 2, 2024



1:53,000

- Highways
- Primary Roads, MNRF
- Branch Roads, MNRF
- Operational Roads, MNRF
- Local Roads
- Vacant Trapline Area
- Township Boundary
- MNRF District
- Waterbody
- Watercourse
- Lot Fabric
- Crown Land Disposition
- Regulated Provincial Park
- Patent Land

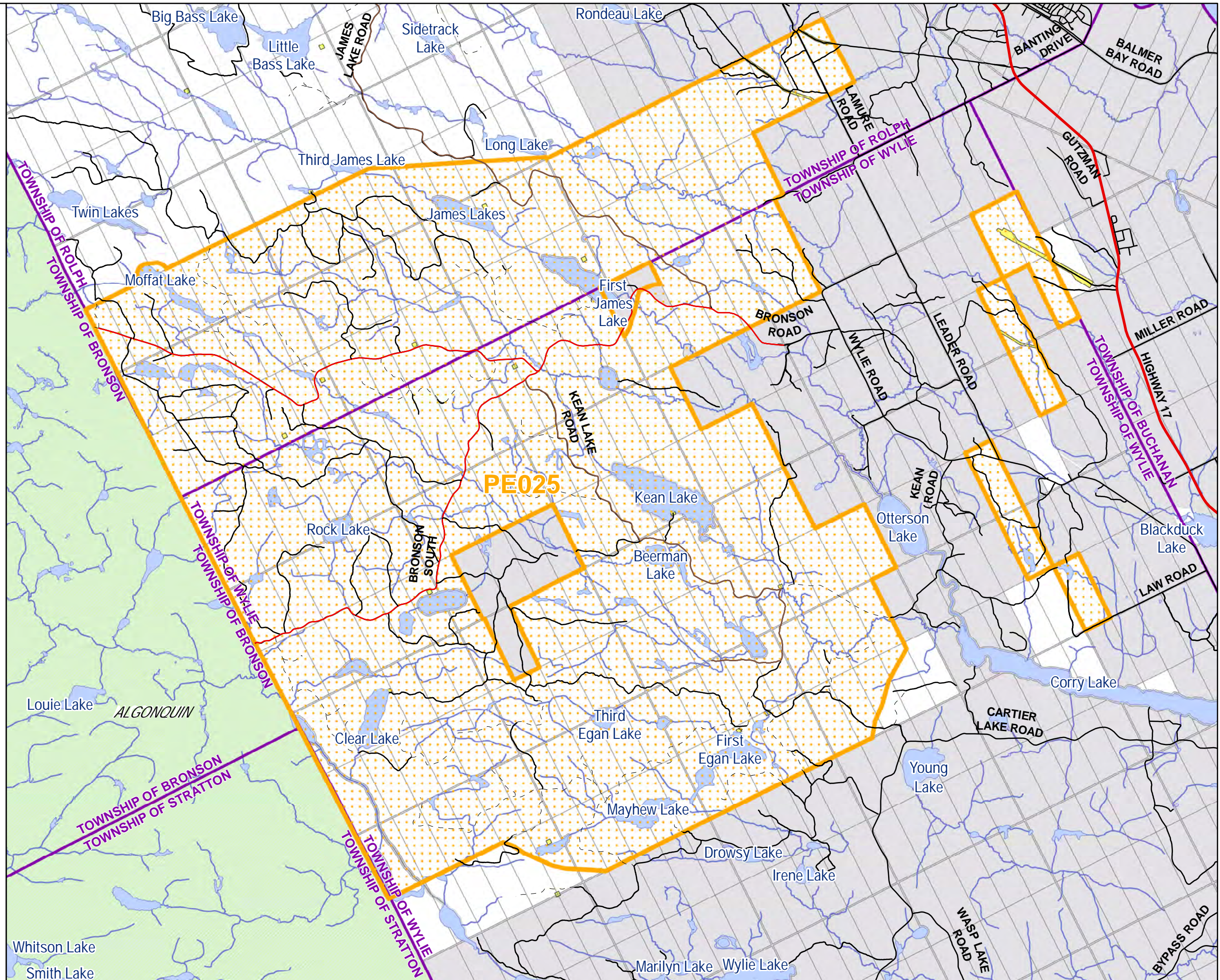
Disclaimer:
This map is illustrative only. Do not rely on this map for legal administrative purposes. Do not rely on it as being a precise indicator of routes, locations of features, or as a guide to navigation. This map may contain cartographic errors or omissions.

Data Sources:
Ministry of Natural Resources and Forestry, 2024

Projected Coordinate System:
MNR Lambert Conformal Conic

Geographic Coordinate System:
GCS North American 1983

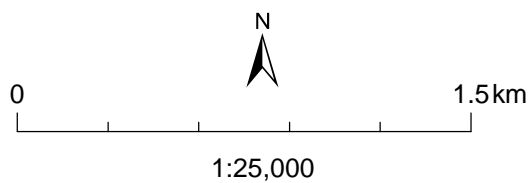
Produced by the Ministry of Natural Resources and Forestry.
© 2024, King's Printer for Ontario
Published 2024-02-02





Pembroke District Trapline PE038

January 30, 2024



-  Highways
-  Primary Roads, MNRF
-  Operational Roads, MNRF
-  Local Roads
-  Vacant Trapline Area
-  Township Boundary
-  MNRF District
-  Waterbody
-  Watercourse
-  Crown Game Preserve
-  Lot Fabric
-  Crown Land Disposition
-  Conservation Reserve
-  Patent Land

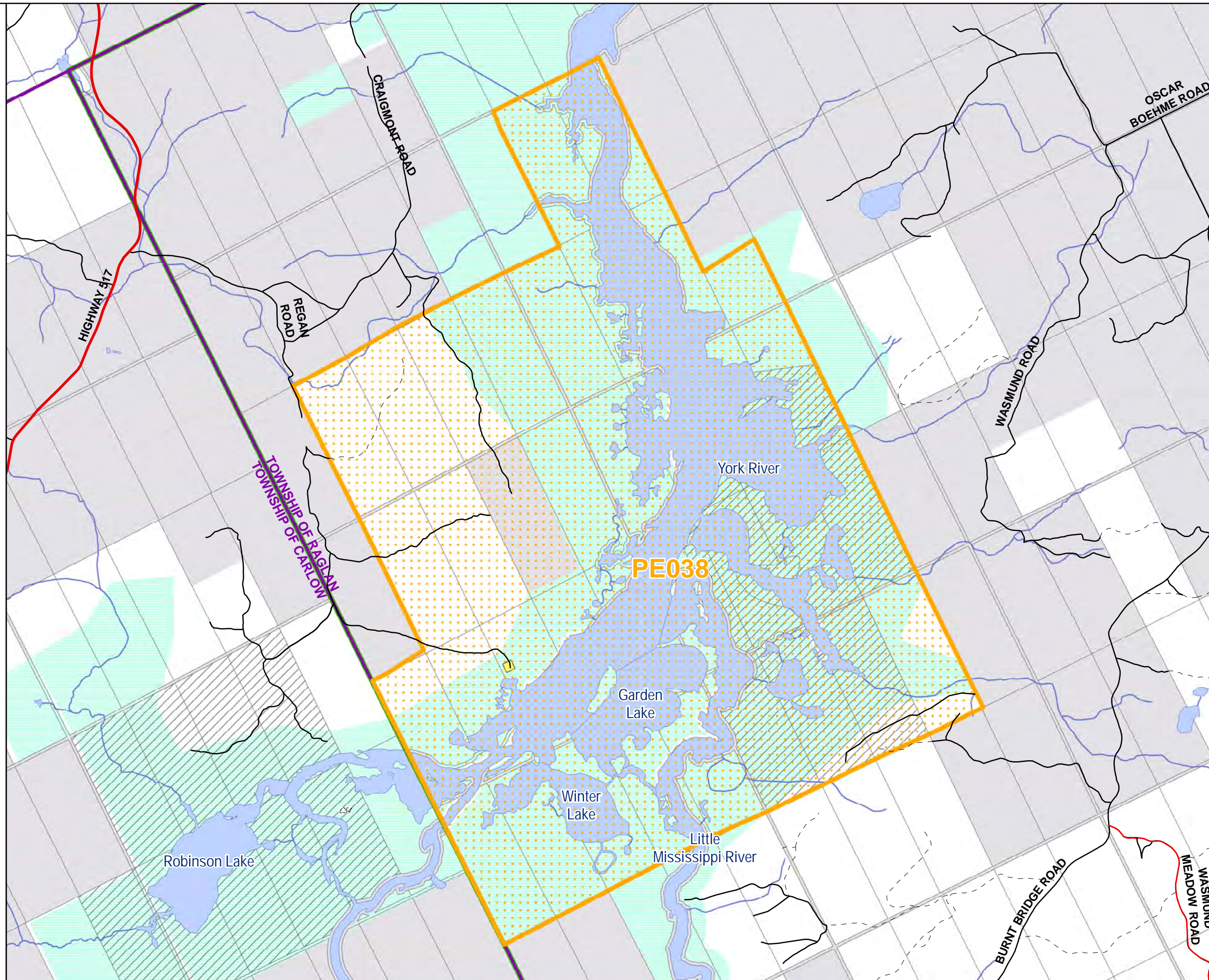
Disclaimer:
This map is illustrative only. Do not rely on this map for legal administrative purposes. Do not rely on it as being a precise indicator of routes, locations of features, or as a guide to navigation. This map may contain cartographic errors or omissions.

Data Sources:
Ministry of Natural Resources and Forestry, 2024

Projected Coordinate System:
MNR Lambert Conformal Conic

Geographic Coordinate System:
GCS North American 1983

Produced by the Ministry of Natural Resources and Forestry.
© 2024, King's Printer for Ontario
Published 2024-01-30








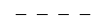







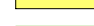

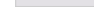
Pembroke District Trapline PE048

January 30, 2024



0 3km

1:44,431

-  Highways
-  Primary Roads, MNRF
-  Branch Roads, MNRF
-  Operational Roads, MNRF
-  Local Roads
-  Vacant Trapline Area
-  Township Boundary
-  MNRF District
-  Waterbody
-  Watercourse
-  Lot Fabric
-  Crown Land Disposition
-  Regulated Provincial Park
-  Patent Land

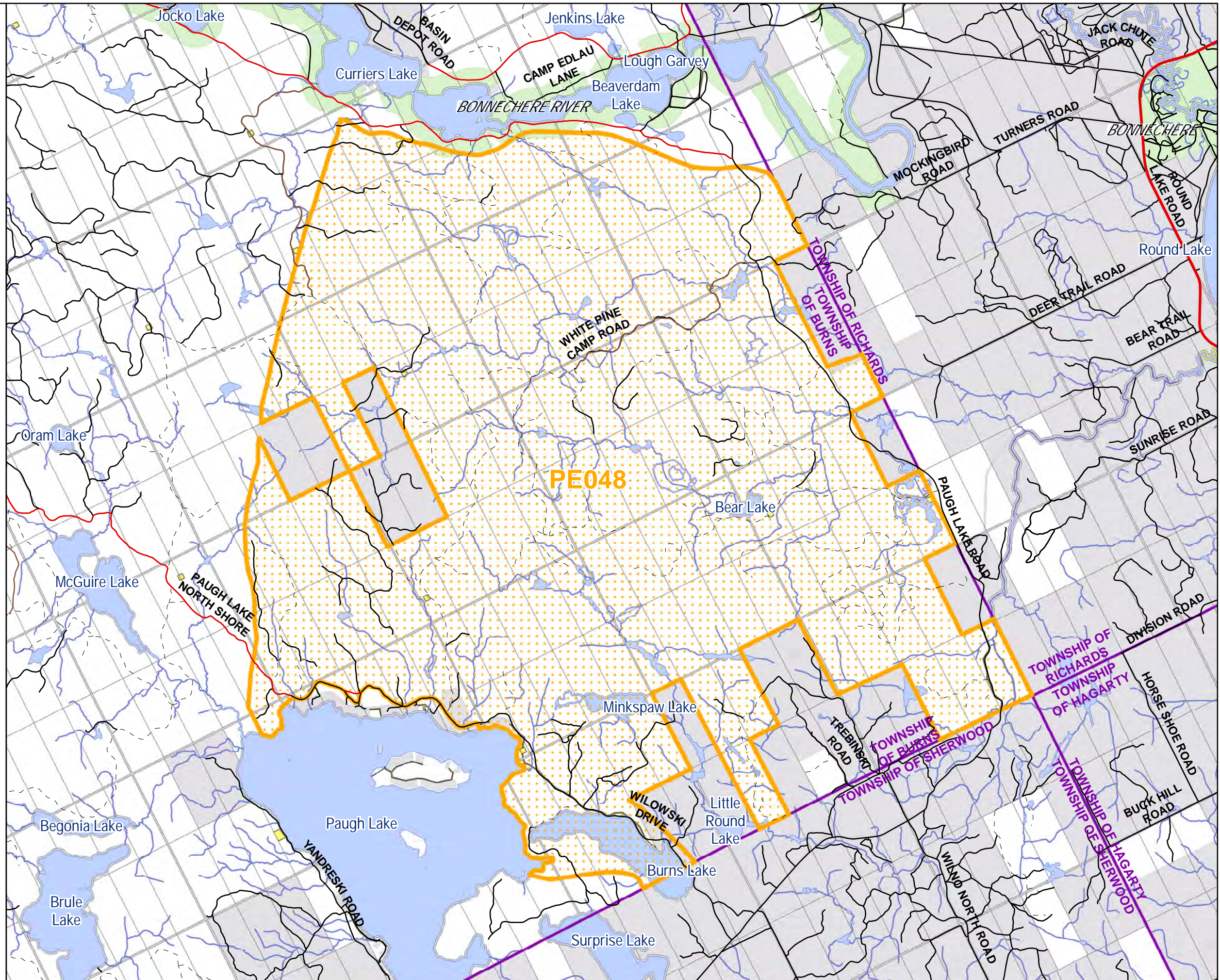
Disclaimer:
This map is illustrative only. Do not rely on this map for legal administrative purposes. Do not rely on it as being a precise indicator of routes, locations of features, or as a guide to navigation. This map may contain cartographic errors or omissions.

Data Sources:
Ministry of Natural Resources and Forestry, 2024

Projected Coordinate System:
MNR Lambert Conformal Conic

Geographic Coordinate System:
GCS North American 1983

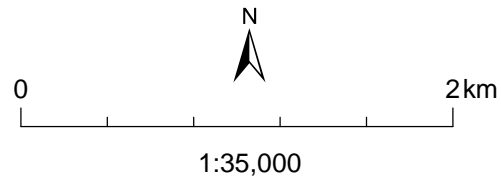
Produced by the Ministry of Natural Resources and Forestry.
© 2024, King's Printer for Ontario
Published 2024-01-30





Pembroke District Trapline PE077

January 30, 2024



- Highways
- Primary Roads, MNRF
- Branch Roads, MNRF
- Operational Roads, MNRF
- Local Roads
- Vacant Trapline Area
- Township Boundary
- MNRF District
- Waterbody
- Watercourse
- Lot Fabric
- Crown Land Disposition
- Patent Land

Disclaimer:
This map is illustrative only. Do not rely on this map for legal administrative purposes. Do not rely on it as being a precise indicator of routes, locations of features, or as a guide to navigation. This map may contain cartographic errors or omissions.

Data Sources:
Ministry of Natural Resources and Forestry, 2024

Projected Coordinate System:
MNR Lambert Conformal Conic

Geographic Coordinate System:
GCS North American 1983

Produced by the Ministry of Natural Resources and Forestry.
© 2024, King's Printer for Ontario
Published 2024-01-30

